

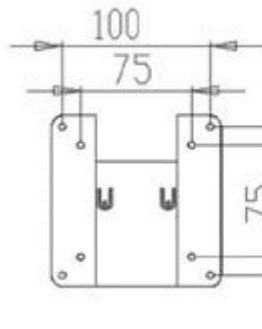
# Instruction manual: WM-25

## Views:

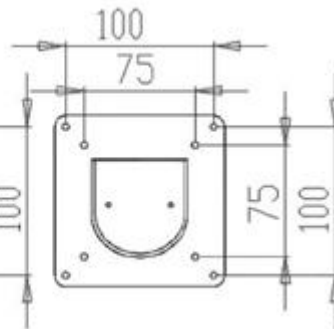
3D Picture



Wall Mount View





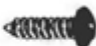
TV Mount View



Lateral View



## Screw types:

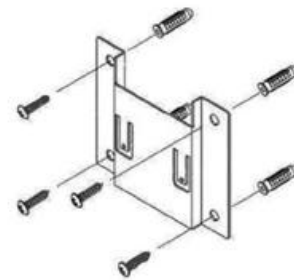
		
M4x8 screw-4	wood screws-4	Wall Anchor-4

### Step 1:

Please make sure the thickness of the wall is over 5cm and the material is suitable for installation.

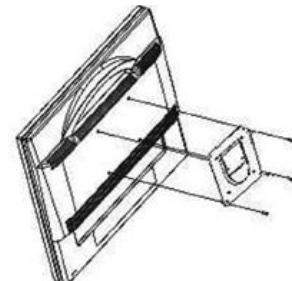
For a wooden wall, please choose wood screws 4pcs.

For a concrete wall, please choose wall anchors 4pcs wall Anchor.



### Step 2:

Remove the TV plug before installation. Use the M4X12 screw to fasten the screen



### Step 3:

Combine the screen mount and the mount of wall and make sure the screen mount fix on the mount of wall.

